

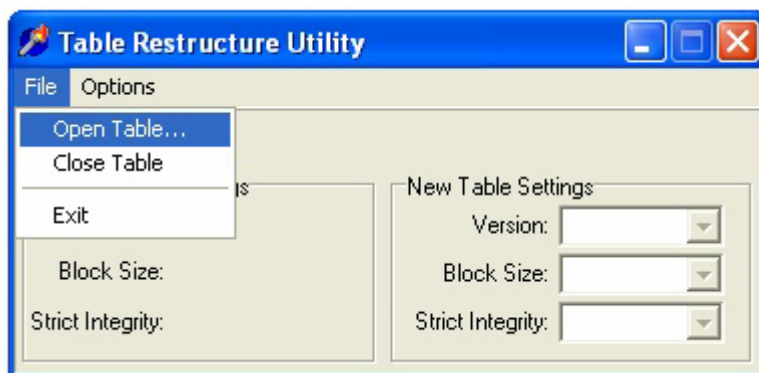
Solving Performance Problems DriveRight VMS 2.6.x

The DriveRight Vehicle Management Software, version 2.6.x is using PARADOX tables. These tables are created with a standard block size of 2048, which theoretically allows a database size of 128 Mbyte. But in real life, a database size over 20 Mbyte will already suffer from performance loss, and even corrupted data is possible.

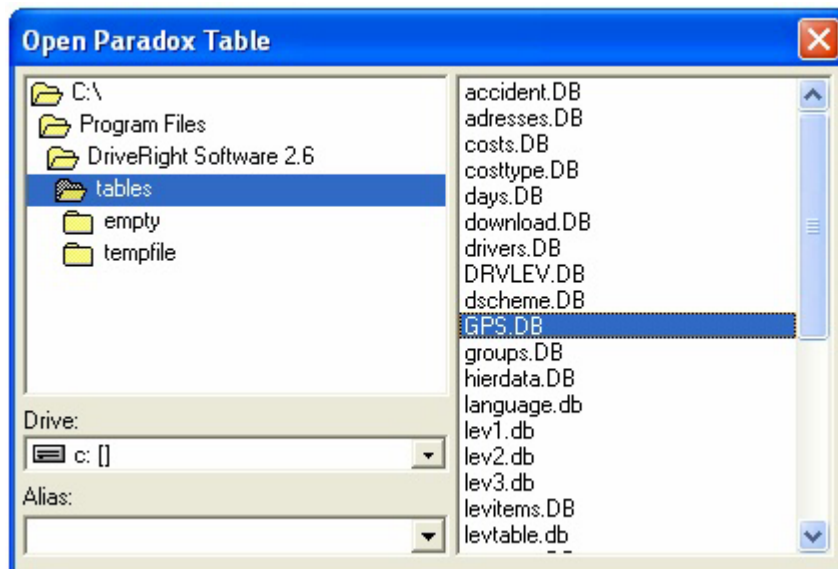
To solve this problem, simply download the following tool from our website and increase the block size of the tables to the maximum.

www.driveright.cc/download/paradox.zip

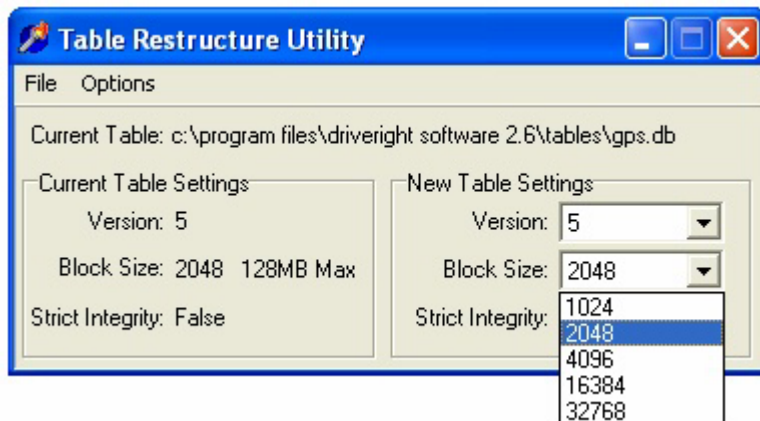
Unzip the file in a directory and start up: PxRest.exe



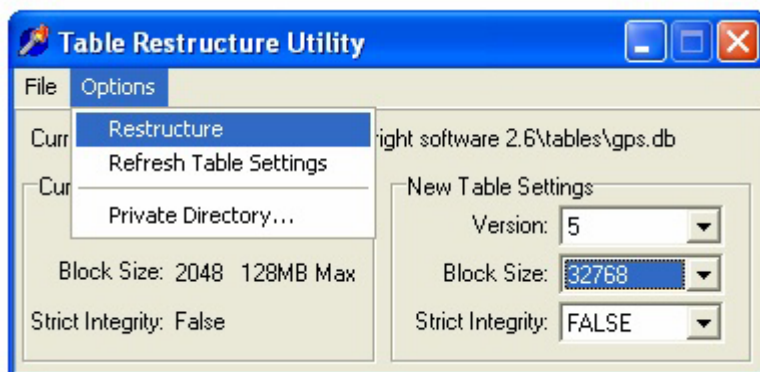
Select File|Open Table



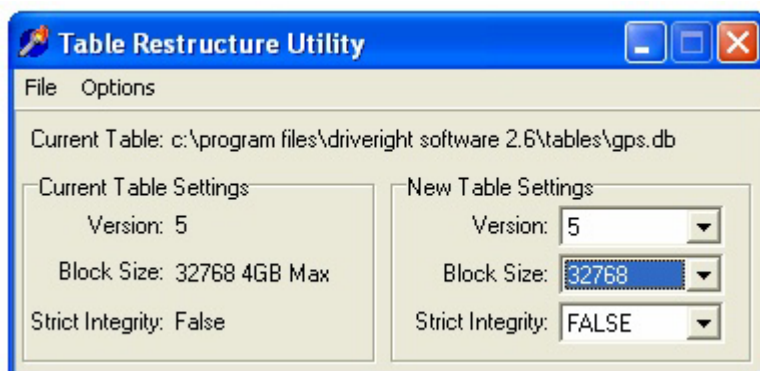
Double click on GPS.DB to open the file



With the table open, open the drop down list box and select 32768 for block size



Select Options|Restructure to change the block size of the table.



To see the results: Options|Refresh Table Settings. On the left side of the window, the block size of 32768 is shown, allowing a theoretical database size of 4Gb (expected good performing database size will be a maximum of 200 Mbytes).

Repeat these action for the following databases: trips.db , days.db , addresses.db.

Also, it is recommended the update the structure of the tables in the <empty> directory. Whenever you need an empty table, the structure will be good from the start on.