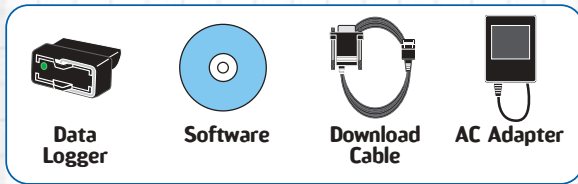


carchip™ is so compact, that once installed it is essentially invisible. It's perfect for:

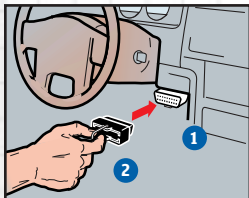
- Amateur mechanics and others who like to tinker under the hood
- Car enthusiasts who enjoy "taking care of their baby"
- Fleet managers (delivery companies, rental car companies)
- Business travelers (sales reps, service personnel)
- Parents who want to monitor their teen's driving habits
- Anyone who wants to see how their car and its drivers are performing

The carchip system comes with everything you need for use, diagnosis, reading, and analysis:



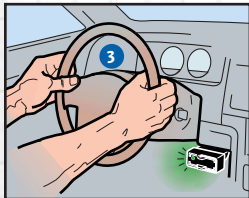
System Requirements:

- | | |
|----------------------|---------------------|
| Windows 95 or above | 5MB hard disk space |
| One free serial port | CD-ROM drive |



Easy Plug-and-Go Installation

- 1. Locate your car's OBDII connector.**
You'll find it within 3 feet of the driver's seat.
- 2. Plug in carchip.**
The blinking light tells you it's installed and ready.
- 3. Start driving.**
carchip starts logging data immediately.



Easy instructions for data download to your PC are included.



Continuously logs performance under the hood and behind the wheel.

carchip™

What if you could read your car's mind?

Continuously logs performance under the hood and behind the wheel.



Introducing **carchip**[™] the smartest OBD II scan tool you can buy.

carchip installs in seconds and lets you:

Troubleshoot your engine.

Identify specific problems, trace intermittent ones, and eliminate guesswork in repairs.

Log your car's performance.

View straightforward graphs that show summary and detail reports for each trip.

Monitor driver performance.

Set thresholds for speed, acceleration, and braking, then see when they are exceeded. Great for training new drivers, managing fleets, and reviewing teen drivers' performance.

Save money, time, and worry.

Clear your own check engine light; walk into a repair shop more informed and confident.

carchip fits all 1996 and later foreign and domestic vehicles to automatically record and store 75 hours of trip details, including:

Time, date, and distance for each trip

Speed – logged every 5 seconds

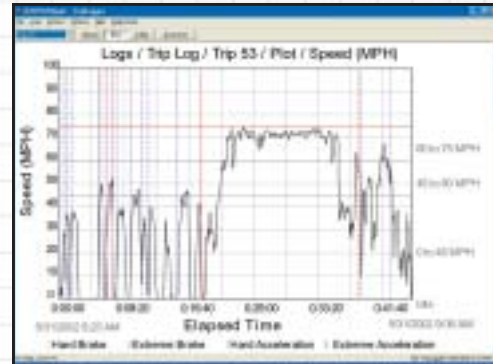
carchipE/X also creates an Accident Log by recording the critical 20 seconds of speed during a hard-braking event

Hard accelerations and decelerations

Engine diagnostic trouble codes and status of other engine parameters when the code occurred

Idle time

Time and date **carchip** is connected or disconnected



Sample trip log (actual screens will vary).

In addition to the above features, carchipE/X stores 300 hours of trip details and measures up to four engine parameters every 5 to 60 seconds. Choose from 23 parameters, including:

RPM

Throttle position

Engine load

Coolant temperature

Intake manifold pressure

Air flow rate

Intake air temperature

Timing advance

Fuel pressure

Fuel system status

Short- and long-term fuel trim

Oxygen sensor output voltage

Battery voltage

